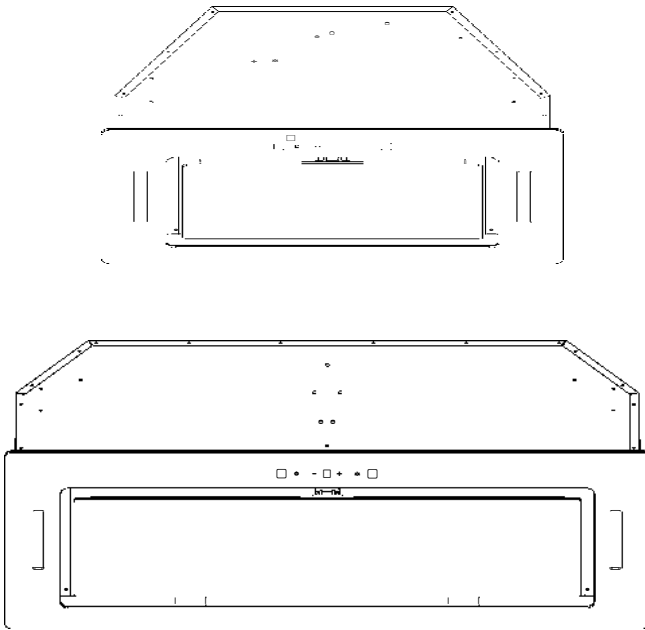


## Installation and user's manual



Model:UDMCAD52GB  
UDMCAD85GB

# CONTENT

---

INTRODUCTION .....	2-4
INSTALLATION INSTRUCTIONS.....	5
AIR OUTLET INSTALLATION METHOD.....	6
EMBEDDED GLASS SURFACE.....	6-7
OPERATION.....	8
MAINTENANCE.....	9-11
ENVIRONMENTAL PROTECTION.....	12

# INTRODUCTION

---

## **Thank you for choosing this cooker hood.**

This instruction manual is designed to provide you with all required instructions related to the installation, use and maintenance of the appliance.

In order to operate the unit correctly and safely, please read this instruction manual carefully before installation and usage.

## **SAFETY PRECAUTION**

- Never let the children operate the machine.
- The cooker hood is for home use only, not suitable for barbecue, roast shop and other commercial purpose.
- Use a damp cloth and neutral soap to clean the cooker hood after the specified time (suggestion: every 2 months), and keep the unit from danger of burning. There is a fire risk if cleaning is not carried out in accordance with the instructions.
- Please keep the kitchen room with good convection before connecting this appliance; please check that the power supply cord is undamaged. A damaged supply cord must be replaced by qualified service personnel only.
- Regulations concerning the discharge of air have to be fulfilled.
- This appliance can be used by children aged from 8 years and above and also the persons with reduced physical, sensory or mental capabilities or lack of experience and knowledge if they have been given supervision or instruction concerning use of the appliance in a safe way and understand the hazards involved. Children shall not play with the appliance. Cleaning and user maintenance shall not be made by children without supervision.
- If the supply cord is damaged, it must be replaced by the manufacturer, its service agent or similarly qualified persons in order to avoid a hazard.
- There shall be adequate ventilation of the room when the range hood is used at the same time as appliances burning gas or other fuels; the range hood is only intended to be installed over a hob with no more than four hob elements; The air must not be discharged into a flue that is used for exhausting fumes from appliances burning gas or other fuels

Range hoods and other cooking fume extractors may adversely affect the safe operation of appliances burning gas or other fuels (including those in other rooms) due to back flow of combustion gases.

These gases can potentially result in carbon monoxide poisoning. After installation of a range hood or other cooking fume extractor, the operation of flued gas appliances should be tested by a competent person to ensure that back flow of combustion gases does not occur.



**CAUTION:**

Accessible parts may become hot when used with cooking appliance.

Electrical Shock Hazard

Only plug this unit into a properly earthed outlet.

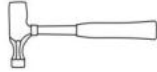
If you have doubts, seek advice from a suitably qualified engineer.

- Lamp type:DC:12V ,AC:110-240V;
  - Shape description: round ;
  - Rated wattage of the intended lamp: 1.5W;
  - Max wattage of a potential replacement lamp: 1.5W;
  - Rated voltage or voltage range of lamp : DC:12V AC:110-240V;
  - Nominal dimension of lamp: 68mm<sup>2</sup>.
- 
- Lamp type:DC:12V ,AC:110-240V;
  - Shape description: Square ;
  - Rated wattage of the intended lamp: 1.5W;
  - Max wattage of a potential replacement lamp: 1.5W;
  - Rated voltage or voltage range of lamp : DC:12V AC:110-240V;
  - Nominal dimension of lamp: 120mm.

## Tools Required



Pencil



Hammer



Level



Measuring tape



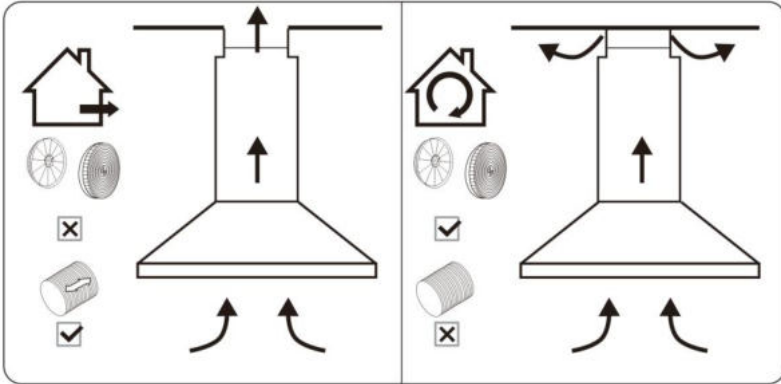
Screwdriver



Electric drill or  
powered screwdriver

## Prepare for installation:

**Warning:** Failure to install the screws or fixing device in accordance with these instructions may result in electrical hazards.

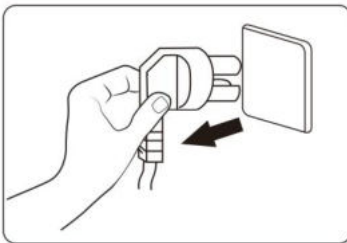


**DUCTED OPTION**

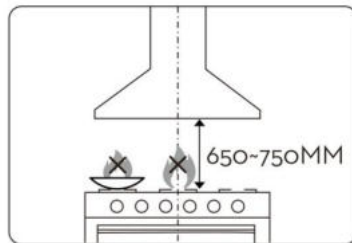
**RECIRCULATION OPTION**

a. If you have an outlet to the outside, your cooker hood can be connected as above picture by means of a pipe (with an interior diameter of 150mm).

If you don't have an outlet to the outside, you can go with recirculation mode by using carbon filter.



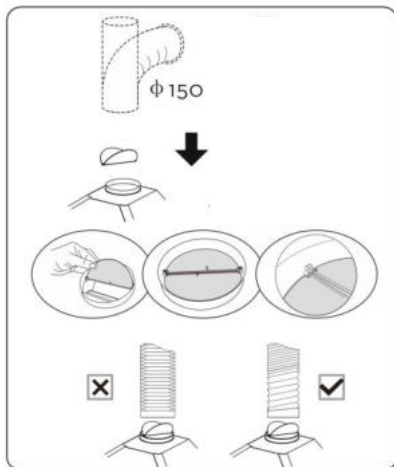
b. Before installation, turn the unit off and unplug it from the outlet.



c. The cooker hood should be placed at a distance of 650~750mm above the cooktop for the best effect.

**NOTE:** Do not flame under the range hood

## AIR OUTLET INSTALLATION METHOD



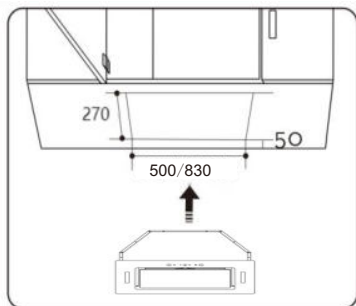
**Installation method for 150mm diameter pipe:** insert the one-way-valve as the picture and fix the pipe.

**Attention:** The bump of the one-way-valve must be upward.

**Installation method for 120mm diameter pipe:** insert the damper as the picture and fix the converter before placing the duct.

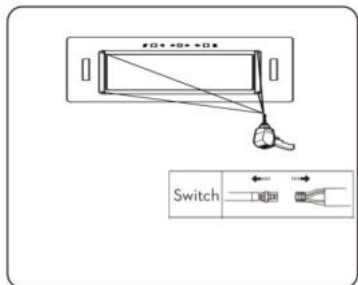
The pipe near the air outlet need to be fully extended.

## EMBEDDED GLASS SURFACE

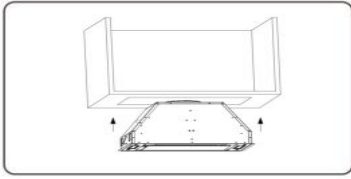


Before installation, check and make a hole on your kitchen cabinet in appropriate size to fit the hood (52cm/85cm).

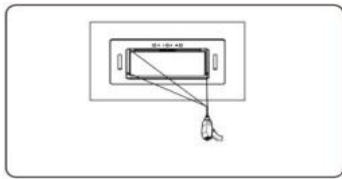
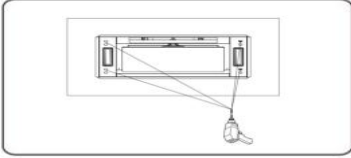
**Note:** The width of the cabinet shall not be less than 270mm and 50mm space shall be reserved at the two ends of the opening. (As picture)



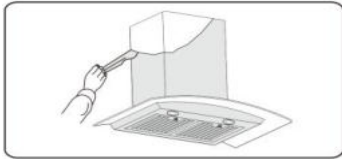
Loosen the screws of the panel, remove the glass panel, disconnect the switch connector, and then place the panel properly. (As shown in the picture)



After removing the glass panel, use the cabinet clips to fix the cabinet and tighten the clip screws. (As shown in the picture )



Connect the switch wires, properly install the glass panel, and secure the screws. (As shown in the picture )



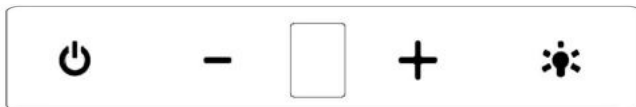
**NOTE:**

**BEFORE USE**


**Please remove the white/blueprotective film on the range hood, chimney covers and baffle filters.**


## OPERATION

---



 **ON/OFF key**

 **Speed plus key**  
For increasing the speed of the fan.

 **Speed decrease key**  
For decreasing the speed of the fan.

 **Light key**

### **Combination key:**

When the motor is in the starting state, simultaneously press and hold the "-" and "+" keys to automatically enter a 5-minute delayed shutdown function: The digital tube retains the current gear number but flashes, indicating that it is counting down. During the countdown process, repeat and long press "-" and "+" simultaneously. The digital tube will remain lit and the countdown will be cancelled. During the delay process, when switching gears, do not exit the button; when closing the gear, exit the delay. After the delay is completed, all key display lights go off and beep continuously. At this point, pressing any key stops the beeping and returns to the off state. If there is no action, it will automatically return to the shutdown state after 5 seconds.

## MAINTENANCE

Before cleaning switch the unit off and pull out the plug.

### I. Regular Cleaning

Use a soft cloth moistened with hand-warm mildly soapy water or household cleaning detergent. Never use metal pads, chemical, abrasive material or stiff brush to clean the unit.

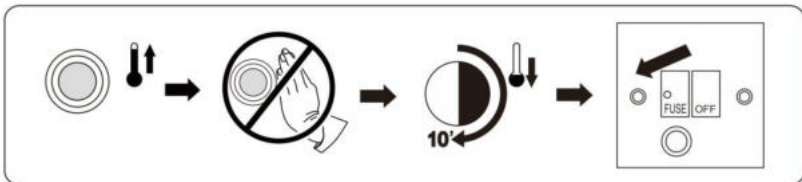
### II. Bulb Replacement

Switch the unit off and unplug the appliance.

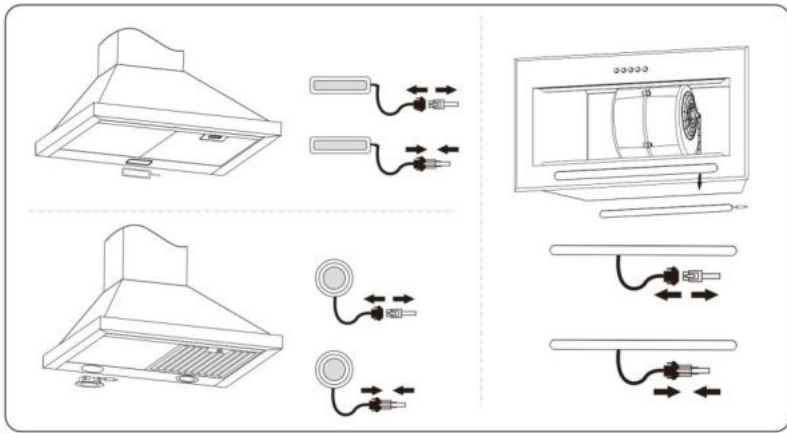
#### **CAUTION: LAMP UNIT MAY BE HOT!**

**WAIT UNTIL THE UNIT IS COOL. BEFORE attempting to replace the LED lamps make sure the unit is powered off and UNPLUGGED.**

- Lamp type:DC:12V ,AC:110-240V;
- Shape description: round ;
- Rated wattage of the intended lamp: 1.5W;
- Max wattage of a potential replacement lamp: 1.5W;
- Rated voltage or voltage range of lamp : DC:12V AC:110-240V;
- Nominal dimension of lamp: 68mm<sup>2</sup>.
  
- Lamp type:DC:12V ,AC:110-240V;
- Shape description: Square ;
- Rated wattage of the intended lamp: 1.5W;
- Max wattage of a potential replacement lamp: 1.5W;
- Rated voltage or voltage range of lamp : DC:12V AC:110-240V;
- Nominal dimension of lamp: 120mm.

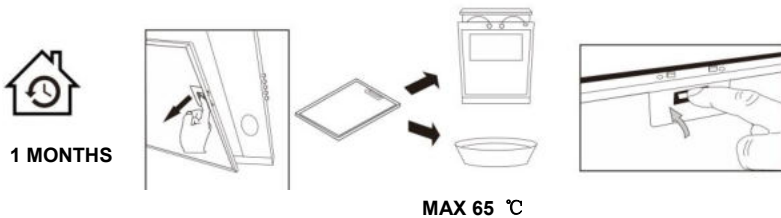


The Bulb/Lamp may be hot,leave it 10 minutes before replacement.



### **III. Aluminium and carbon filters replacement**

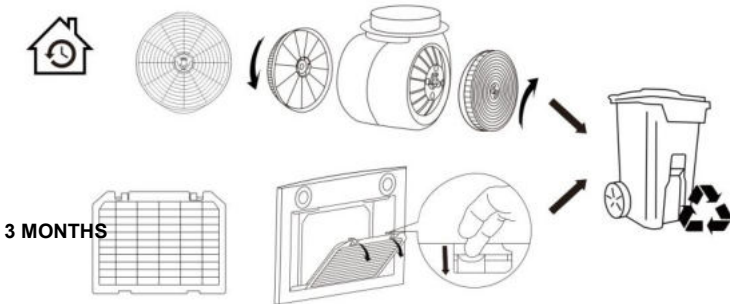
In order to install the carbon filter, the grease filter should be detached first. Press the lock and pull it downward.



**Aluminium filters:** To avoid fires, clean thoroughly once a month or whenever the display pilot lights up (if fitted). To do so, remove the filters and soak in hot water and detergent for an hour. If using a dishwasher, position the filters vertically to improve the cleaning process.

**VI. Carbon filter life time:** Suggest changing to new one every 3 months (According to different kitchen condition, the life time of carbon filter might be longer or shorter than 3 months).

**Installation:** Fix carbon filter into the unit and turn it in clockwise direction. Repeat the same on the other side.



**Important Notice:**

1. Make sure the filter is securely locked. Otherwise, it would loosen and cause abnormal noise and danger.
2. Using carbon filter would reduce the air flow of the range hood.

## MAINTENANCE

Fault	Cause	Solution
Light on, but fan does not work	The fan blade is jammed.	Switch off the unit and repair by qualified service personnel only.
	The motor is damaged.	
Both light and fan do not work	Light bulb burn.	Replace the LED light with correct rating.
	Power cord is loose.	Plug into the power supply again.
Serious Vibration of the unit	The fan blade is damaged.	Switch of the unit and repair by qualified service personnel only.
	The fan motor is not fixed tightly.	
	The unit is not hung properly on the bracket.	Take down the unit and check whether the bracket
Suction performance not good	Too far distance between the unit and the cooktop.	Readjust the distance between 650-750mm.

## ENVIRONMENTAL PROTECTION

---

Waste electrical products should not be disposed of with household waste.

Please recycle where facilities exist.

Check with your Local Authority or retailer for recycling advice.





LIKE TO  
KNOW MORE?

Operating and installation instructions:

Original

✓ Translation

**Plaza Wholesale Group PTY Ltd.**  
**ACN 657 824 050**

**Address : Angle rue du Gymnase et laborRobert**  
**4D/10 Childs rd Chipping Norton**

The distribution and duplication of this document, as well as the use and disclosure of its contents are prohibited unless expressly authorised.

These operating and installation instructions have been drawn up with the greatest of care. But it cannot be ruled out that subsequent technical modifications have not yet been incorporated or the relevant content has not yet been adapted. Please accept our apologies in this eventuality. An updated version can be requested from our team. Subject to printing errors and mistakes.

All rights reserved.

